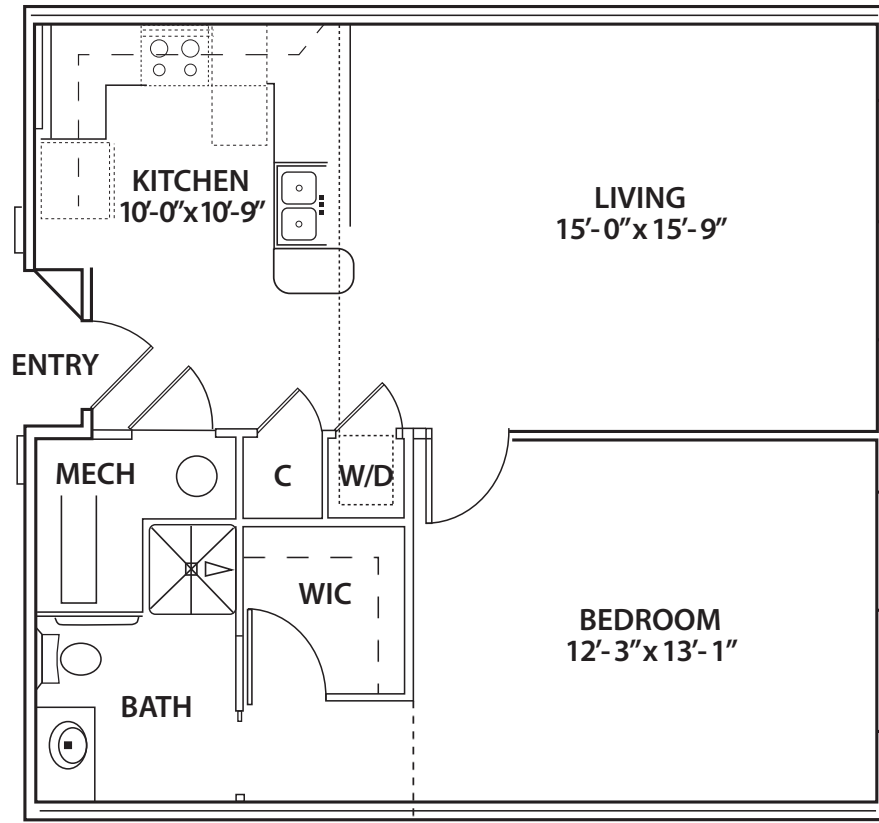


The Lodge Sample Floor Plans

One Bedroom, One Bathroom Apartment

- 750 Square Feet (approximate)



- Notes: _____

Please contact a Balfour Resident Advisor for additional floor plan options. Note: Apartment dimensions and square footage estimates are approximate.

BALFOUR
* * SENIOR LIVING * *

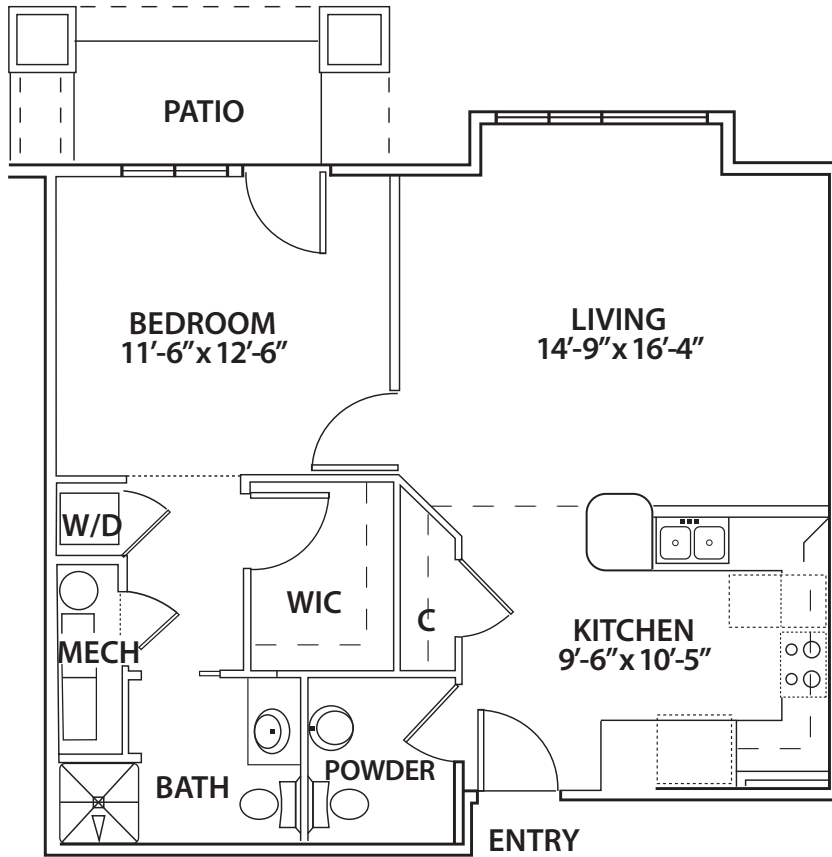
303.867.6400 | 1331 E. Hecla Dr. | Louisville, CO | 80027 | www.BalfourCare.com

Pricing and details subject to change at any time. Contact Balfour Senior Living for more information. Revised February 2017.

The Lodge Sample Floor Plans

One Bedroom, One and a Half Bathroom Apartment

- 800 Square Feet (approximate)



- Notes: _____

Please contact a Balfour Resident Advisor for additional floor plan options. Note: Apartment dimensions and square footage estimates are approximate.

BALFOUR
* * SENIOR LIVING * *

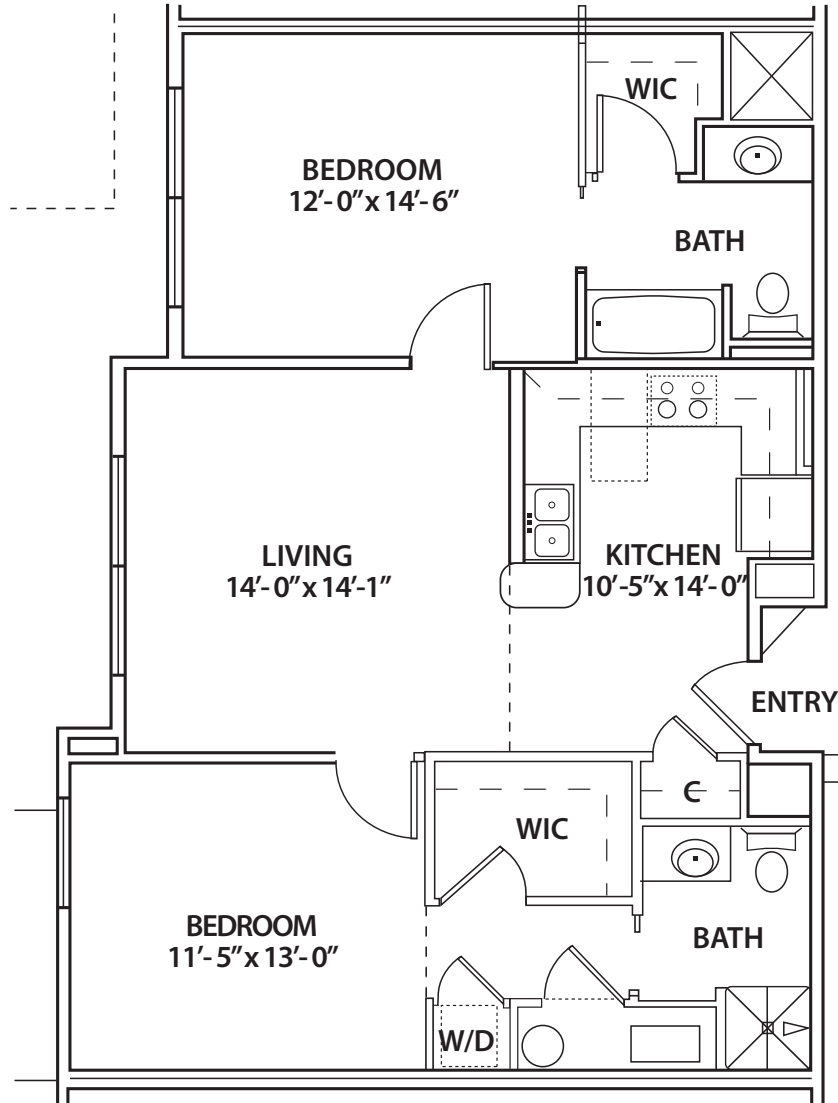
303.867.6400 | 1331 E. Hecla Dr. | Louisville, CO | 80027 | www.BalfourCare.com

Pricing and details subject to change at any time. Contact Balfour Senior Living for more information. Revised February 2017.

The Lodge Sample Floor Plans

Small Two Bedroom, Two Bathroom Apartment

- 1,000 - 1,100 Square Feet (approximate)



- Notes: _____

Please contact a Balfour Resident Advisor for additional floor plan options. Note: Apartment dimensions and square footage estimates are approximate.

BALFOUR
* * SENIOR LIVING * *

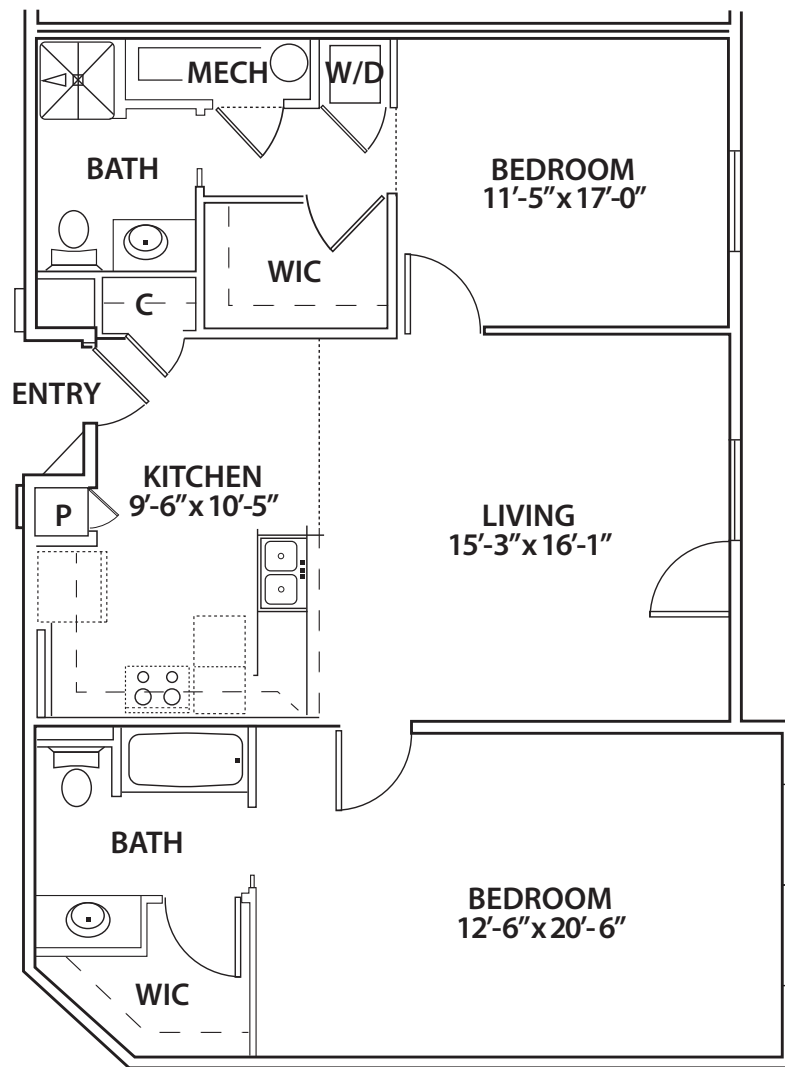
303.867.6400 | 1331 E. Hecla Dr. | Louisville, CO | 80027 | www.BalfourCare.com

Pricing and details subject to change at any time. Contact Balfour Senior Living for more information. Revised February 2017.

The Lodge Sample Floor Plans

Large Two Bedroom, Two Bathroom Apartment

- 1,200 - 1,500 Square Feet (approximate)



- Notes: _____

Please contact a Balfour Resident Advisor for additional floor plan options. Note: Apartment dimensions and square footage estimates are approximate.

BALFOUR
* * SENIOR LIVING * *

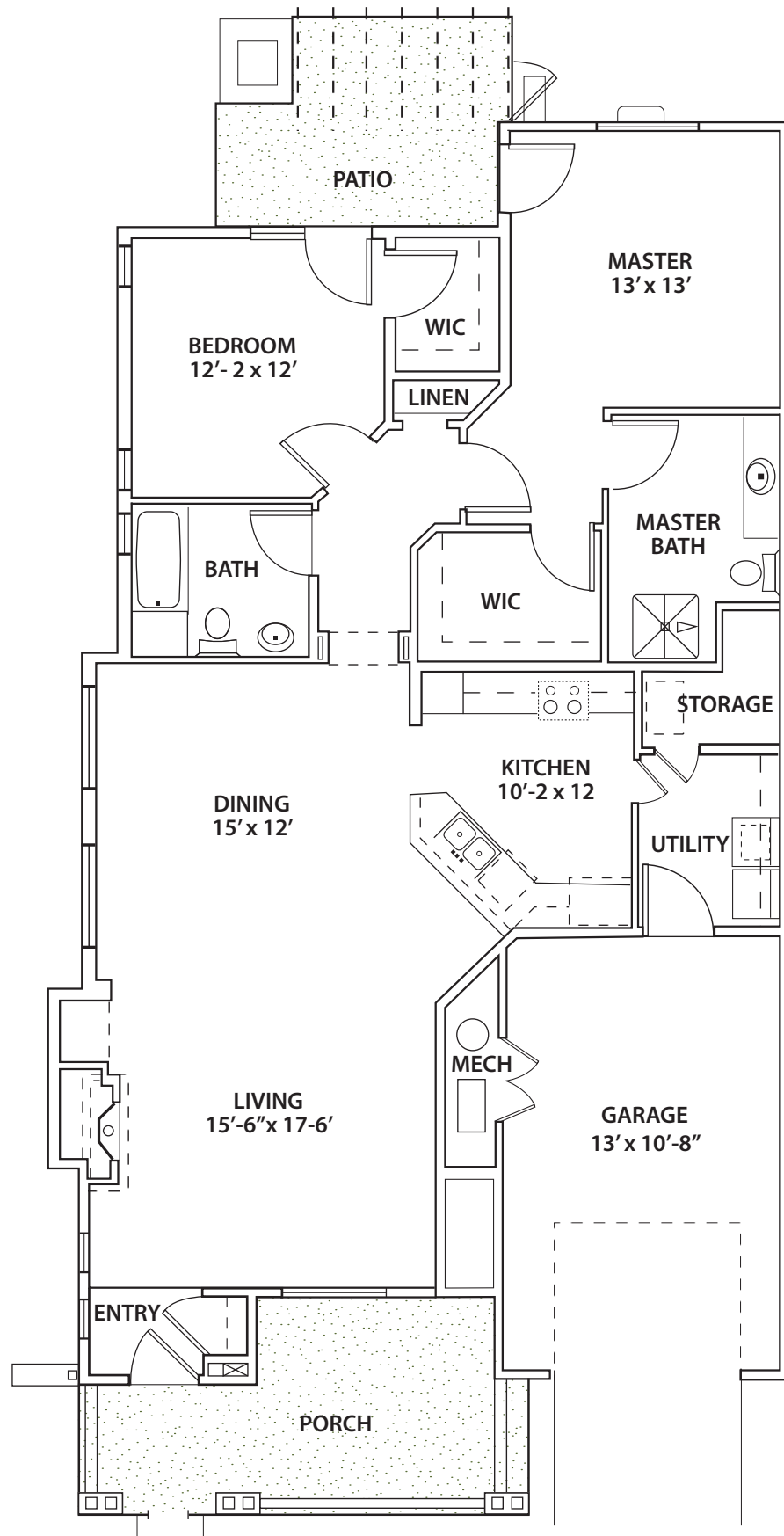
303.867.6400 | 1331 E. Hecla Dr. | Louisville, CO | 80027 | www.BalfourCare.com

Pricing and details subject to change at any time. Contact Balfour Senior Living for more information. Revised February 2017.

The Lodge Sample Floor Plans

Two Bedroom, Two Bathroom, 1 Car Garage Cottage Home

- 1,480 Square Feet (approximate)



• Notes: _____

Please contact a Balfour Resident Advisor for additional floor plan options. Note: Apartment dimensions and square footage estimates are approximate.

BALFOUR
* * SENIOR LIVING * *

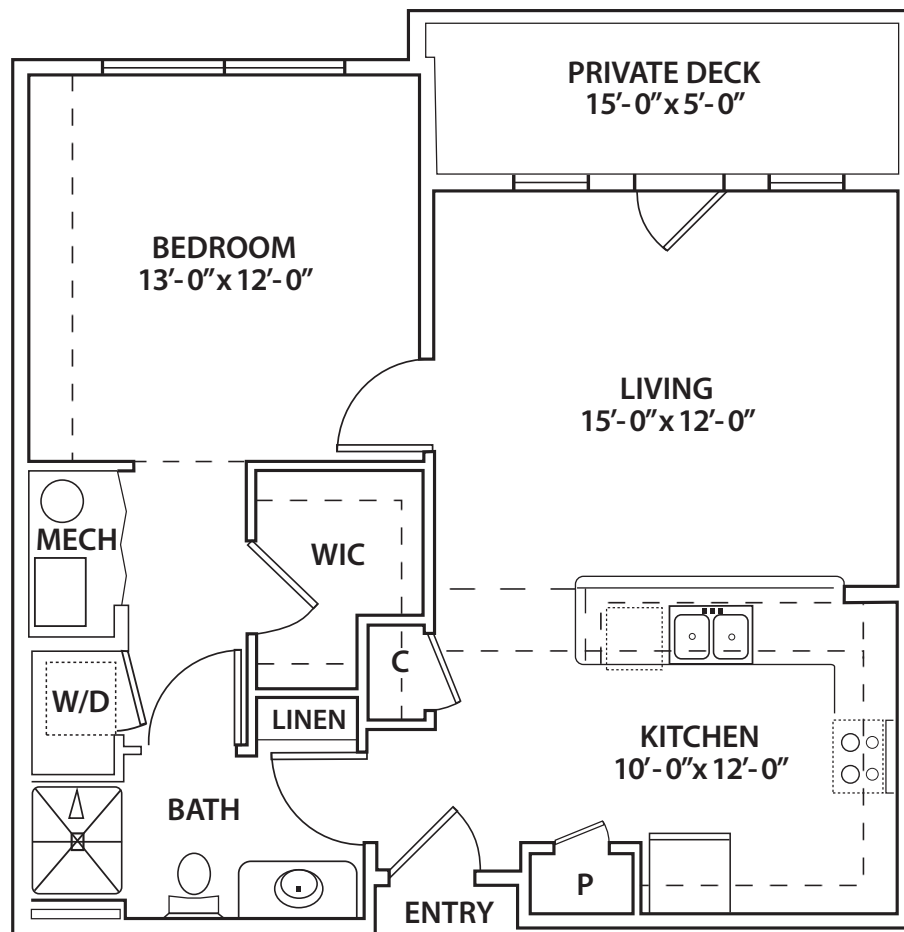
303.867.6400 | 1331 E. Hecla Dr. | Louisville, CO | 80027 | www.BalfourCare.com

Pricing and details subject to change at any time. Contact Balfour Senior Living for more information. Revised February 2017.

The Residences Sample Floor Plans

One Bedroom, One Bathroom Apartment

- 760 Square Feet (approximate)



- Notes: _____

Please contact a Balfour Resident Advisor for additional floor plan options. Note: Apartment dimensions and square footage estimates are approximate.

BALFOUR
* * SENIOR LIVING * *

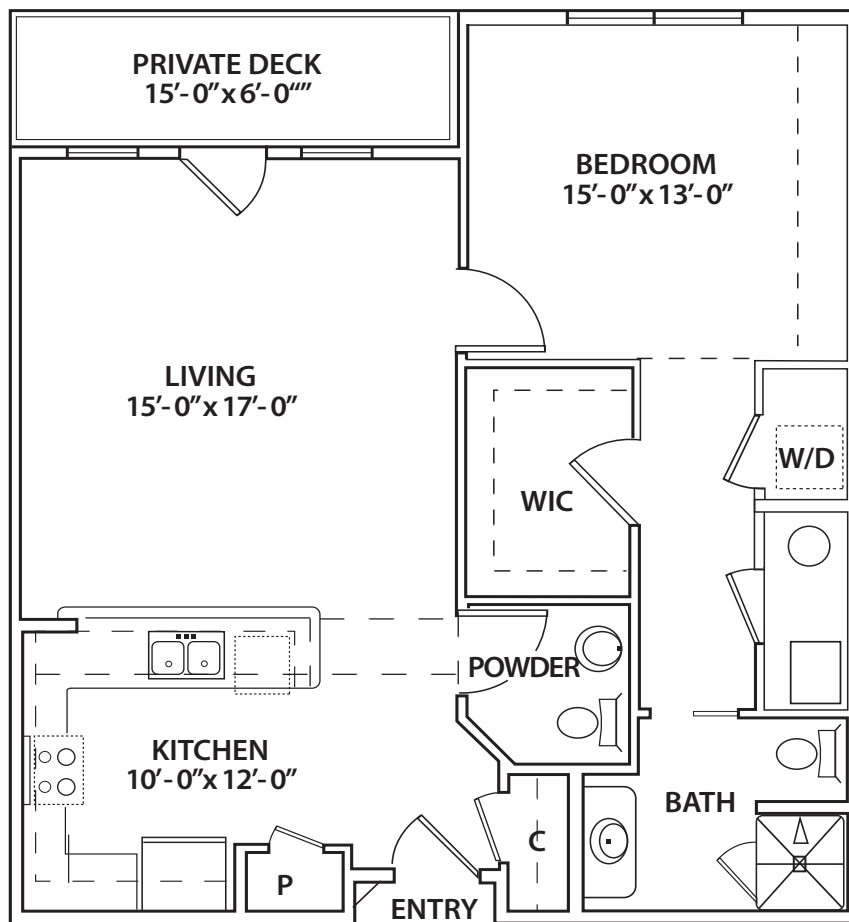
303.867.6400 | 1331 E. Hecla Dr. | Louisville, CO | 80027 | www.BalfourCare.com

Pricing and details subject to change at any time. Contact Balfour Senior Living for more information. Revised February 2017.

The Residences Sample Floor Plans

One Bedroom, One and a Half Bathroom Apartment

- 888 Square Feet (approximate)



- Notes: _____

Please contact a Balfour Resident Advisor for additional floor plan options. Note: Apartment dimensions and square footage estimates are approximate.

BALFOUR
** SENIOR LIVING **

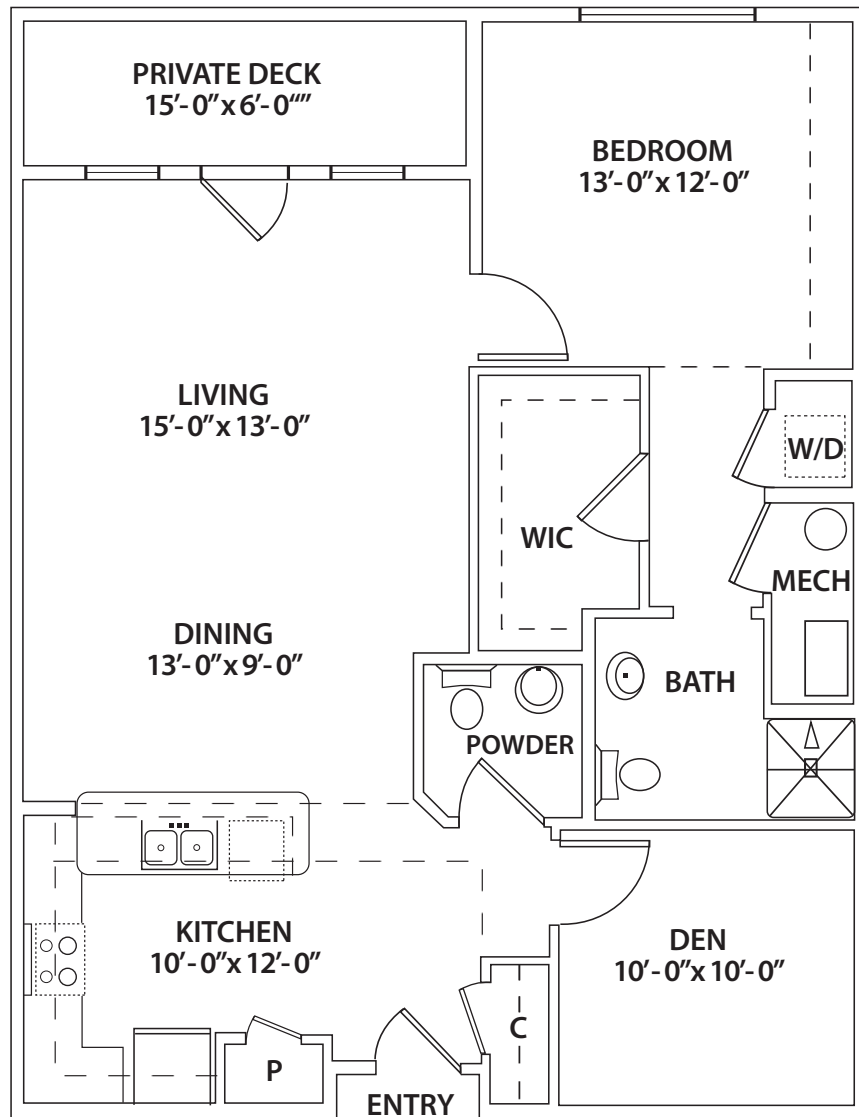
303.867.6400 | 1331 E. Hecla Dr. | Louisville, CO | 80027 | www.BalfourCare.com

Pricing and details subject to change at any time. Contact Balfour Senior Living for more information. Revised February 2017.

The Residences Sample Floor Plans

One Bedroom, One and a Half Bathroom with Den Apartment

- 1,036 Square Feet (approximate)



- Notes: _____

Please contact a Balfour Resident Advisor for additional floor plan options. Note: Apartment dimensions and square footage estimates are approximate.

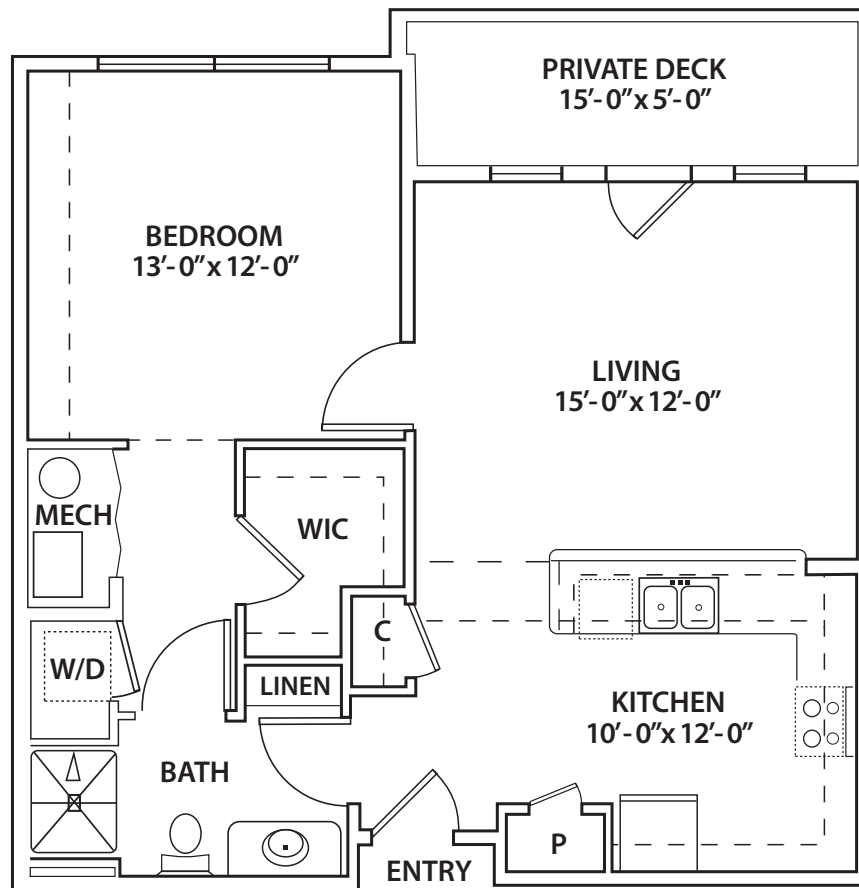
BALFOUR
* * SENIOR LIVING * *

303.867.6400 | 1331 E. Hecla Dr. | Louisville, CO | 80027 | www.BalfourCare.com
Pricing and details subject to change at any time. Contact Balfour Senior Living for more information. Revised February 2017.

The Retreat Sample Floor Plans

One Bedroom, One Bathroom Apartment

- 760 Square Feet (approximate)



- Notes: _____

Please contact a Balfour Resident Advisor for additional floor plan options. Note: Apartment dimensions and square footage estimates are approximate.

BALFOUR
* * SENIOR LIVING * *

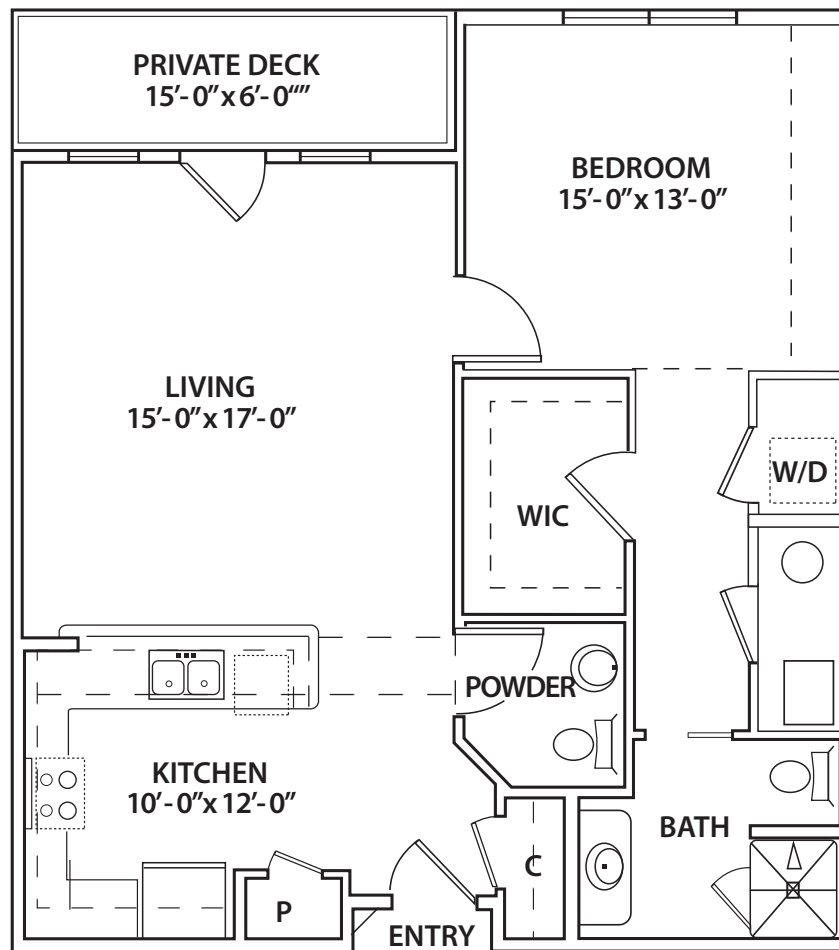
303.867.6400 | 1331 E. Hecla Dr. | Louisville, CO | 80027 | www.BalfourCare.com

Pricing and details subject to change at any time. Contact Balfour Senior Living for more information. Revised February 2017.

The Retreat Sample Floor Plans

One Bedroom, One and a Half Bathroom Apartment

- 888 Square Feet (approximate)



- Notes: _____

Please contact a Balfour Resident Advisor for additional floor plan options. Note: Apartment dimensions and square footage estimates are approximate.

BALFOUR
** SENIOR LIVING **

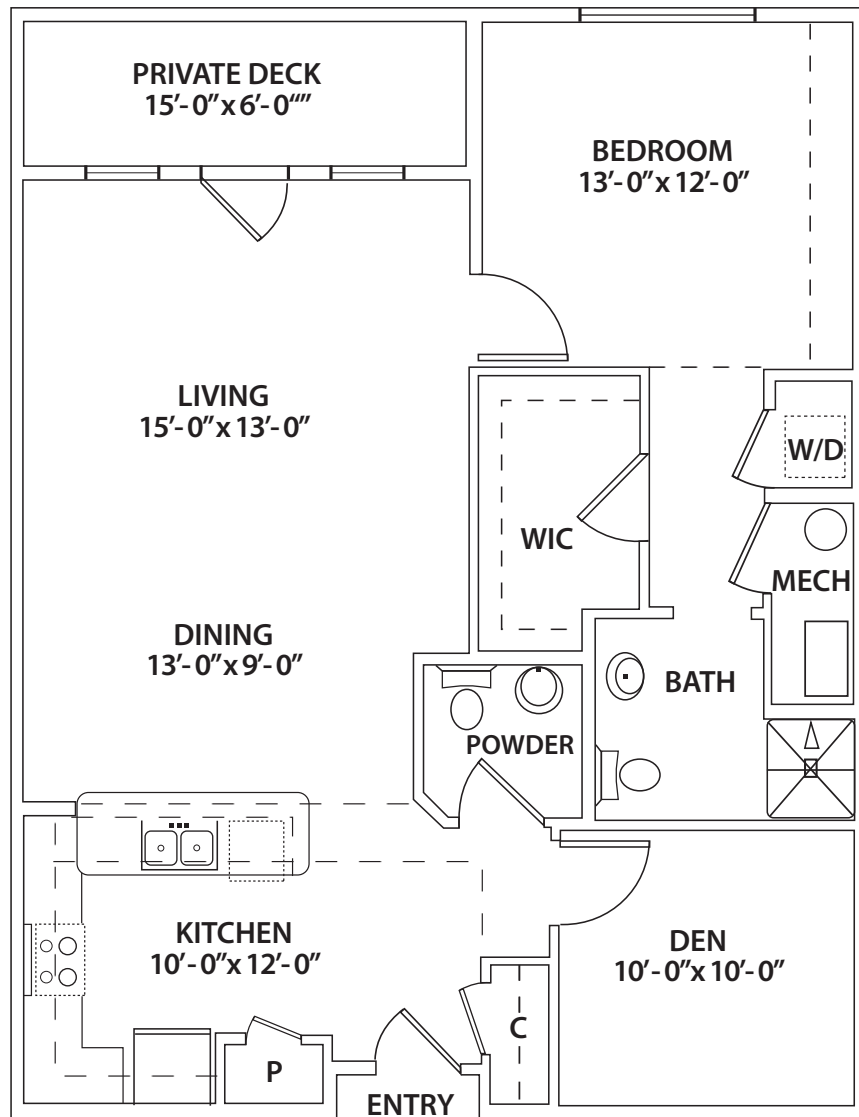
303.867.6400 | 1331 E. Hecla Dr. | Louisville, CO | 80027 | www.BalfourCare.com

Pricing and details subject to change at any time. Contact Balfour Senior Living for more information. Revised February 2017.

The Retreat Sample Floor Plans

One Bedroom, One and a Half Bathroom with Den Apartment

- 1,036 Square Feet (approximate)



- Notes: _____

Please contact a Balfour Resident Advisor for additional floor plan options. Note: Apartment dimensions and square footage estimates are approximate.

BALFOUR
** SENIOR LIVING **

303.867.6400 | 1331 E. Hecla Dr. | Louisville, CO | 80027 | www.BalfourCare.com

Pricing and details subject to change at any time. Contact Balfour Senior Living for more information. Revised February 2017.